



POLY CRAFT

Concept

POLY CRAFT

We propose novel and interesting products that connect awareness and actions for the new normal and sustainable society with ordinary, everyday life.

POLY CRAFT is a combination of POLY, meaning “polymeric” or “multiple,” and CRAFT, meaning elaborate and well-crafted.

We hope that our products will help people to see things from multiple perspectives, and to think about social issues.



Monyamo



Sakiko Tomizawa.

Items for cat lovers and their cats for a society where no cat is left behind, as an extension of a society where no one is left behind. This is a cat house and carrying case that blends in well with your cat's interior, allowing your cat to get used to it on a daily basis so that it can evacuate smoothly in the event of a disaster or other "what-if" situations. By using it on a daily basis, cats can get used to it and humans can evacuate together with their cats without panicking. Also, disaster prevention supplies for cats can be stored in the side of the carrying case. This creates an opportunity to think together about "what-if" situations with cats as well as humans.

For me, this was my first time designing something soft, and we exchanged hand-drawn instructions and desired fabrics while presenting them to the production company. We repeated the prototype three times in China and came close to the ideal shape. In a demonstration test at home, my cat liked the product immediately after the installation and entered the cat house. Even in an unfamiliar environment with other animals in an evacuation shelter, this product makes both cats and humans feel safe.




Artificial flowers and plants were used for the photo shoot while taking animal safety into consideration.





Lunch Tray

 Naoya Shibata

This lunch tray makes it easy to switch between work and lunch. In a world where telecommuting has become the norm, this lunch tray is designed for home workers who do not have a dedicated work space at home, but instead use something like a small dining table to both work and eat. The tray can be easily switched from work to a lunch break by simply placing the tray on top of the laptop computer without having to put it away. We aimed for an organic, soft, curved surface that would facilitate taking a break when used. My usual work is UI design, so I was not familiar with 3D CAD operation. However, it was a problem I wanted to solve, so I repeatedly made suggestions and revisions to create the current shape.

The material was not metal or plastic, but wood that was both relaxing and sturdy enough to prevent any problems with the laptop computer. So, after checking more than 100 samples at a lumber store, we selected hard, tight-grained oak. Thanks also to the downtown woodworking shop that reproduced the design perfectly while taking into account yield and wood strength. This proposal makes it possible to maximize our existing living environment without having to move to a larger house or get a new desk. Even if the way we work changes, we can minimize energy and possessions, leading to a sustainable society.





Crossed the boundary

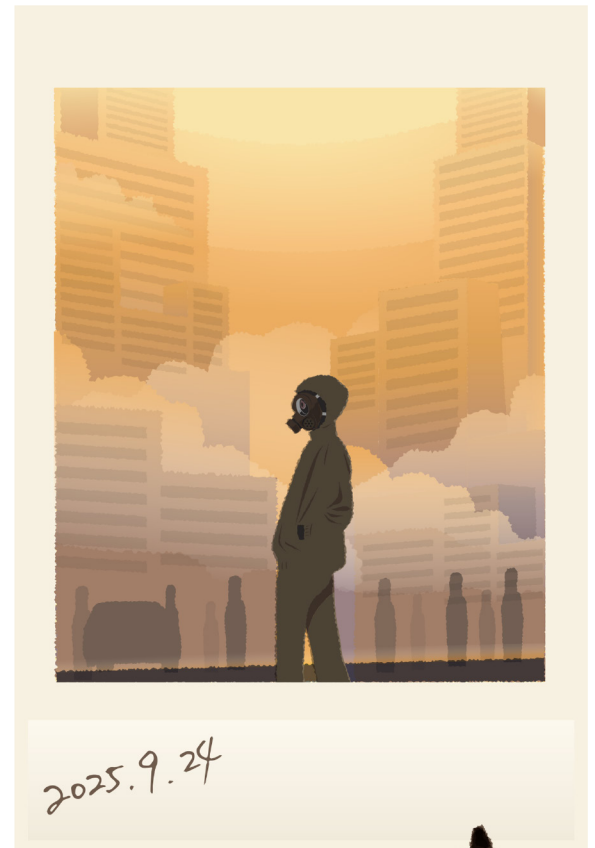


The nine thresholds that must not be crossed, which have irreversible effects on the environment, are collectively called the planetary boundary. This concept, which has been adopted by the SDGs, is expressed in this series of T-shirts, which depict a world in which the environment has crossed a border that can be restored, in the hope of sparking conversation about environmental issues that are difficult to approach. The illustrations have a nostalgic feel and a sense of reality in their depiction of the future, while at the same time using pop expressions to convey the challenging and difficult environmental issues in an easy-to-understand way. Some people thought that using T-shirts as a medium was too conventional, but I believe that the material existence of environmental issues and the use of fashion to express oneself can contribute to making people feel the issue as an entity.

Story

This is Tokyo in the year 2025. The release of PM2.5 and other air pollutants from automobiles, airplanes, and factory waste has resulted in poor visibility and widespread respiratory illnesses in the city. In addition, the depletion of the ozone layer has made direct exposure to the sun's rays dangerous. For these reasons, people's attitudes toward clothing changed. Gas masks and hooded tops and bottoms became the norm, and people needed to protect themselves first. The diversity of clothing has been lost.

Air pollution is largely due to the emissions of the past several years. Therefore, this situation could occur at any time. Even something as seemingly limitless and free as air is at risk.





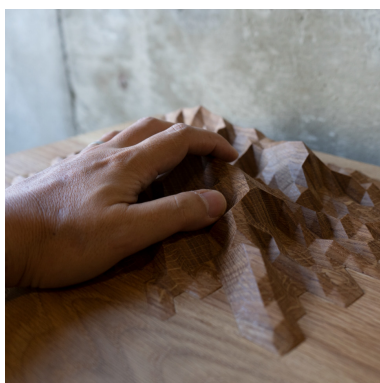
Mountain View Desk



This is a work desk that always has a view of the mountains, for those who want to feel close to nature. As the Corona Disaster increased, I was working from home more and going out less, and I began to feel suffocated being stuck at home. I thought it would be nice to be able to see and touch the mountains every day, and to raise awareness of environmental conservation, so I made the desk carved with mountains on the top panel. The shape of the mountain was reconstructed in my mind from the mountains I had climbed. I wanted to have complete control over the shape, so I created each surface intuitively using a surface modeler, and then transferred the data to a solid modeler 3D CAD system to create the drawing.

I also had a hard time finding a factory with a 5-axis NC router capable of producing complex shapes. In addition to being a rare machine tool, it is difficult to create a single product.

I initially considered using Japanese thinned wood for the top panel, but since thinned wood is not widely distributed, I tried Japanese cedar wood, and in the final prototype, I ended up using foreign oak wood. The reason is that this wood is easy to procure, not too expensive, and hard, so it is easy to process and has a high quality feel. I first tried thinned wood in consideration of environmental issues, and in the end, I was able to create a sturdy desk that could be used for a long time.





Alcohol Lump



Shuich Takeda

The coronavirus pandemic has led to a major change in people's conception of hygiene. Alcohol bottles are no longer a temporary presence; they have become an everyday sight. However, the way in which they are placed still can give the impression that a stopgap measure is being used. In the future, I thought it would be necessary to create a design that takes into consideration the permanent relationship between the alcohol bottle and the space it occupies.

The alcohol bottle glows dimly.
Although it certainly has a presence, it does not have an emergency-like quality.

We will be able to cope with infectious diseases in order to go about our ordinary daily lives. The appearance was designed to sustain this new habit. Assuming the use of a common white alcohol bottle, it can be secured to prevent the bottle from tipping over. The legs of the holder and stand, which can be easily replaced, are made of one piece of steel of the same thickness. We took great pains to balance the shape and thickness of the components so that they would not tip over, while keeping them as thin and unobtrusive as possible to fit in with the architectural environment. We think the lighting effect will be enhanced when placed in a slightly darker location, creating an elegant and clean entrance.

